

# Agg. 01

## Waiting on Picasso

THE PERIPHERAL  
DIALOGUES  
2019

MUSTAFA NEJEM  
KATHRYN NUSSDORF  
NICOLAS PARONNEAU



## AGG. 01 – BUCH

In this studio, we examined conditions on the periphery of Berlin. Often considered sleepy suburbs or abandoned ghost towns, the periphery is becoming more dynamic and important as cities, including Berlin, are getting more crowded, more polluted, and more expensive. Many people find they can no longer live in the center of town, which is often becoming gentrified or otherwise unfamiliar.

Our area of Berlin, Buch, is located at the northeasternmost corner of what was formerly East Berlin. Buch is both a typical quiet suburb and a center for medical research. Once mainly a town of middle class, single family houses, it experienced a housing boom in the 70s and 80s, when the East German government made an effort to densify the periphery of Berlin. High rise housing now dominates the southeastern quadrant of Buch, where whole neighborhoods of apartment blocks from 5 - 11 stories have risen to accommodate workers.

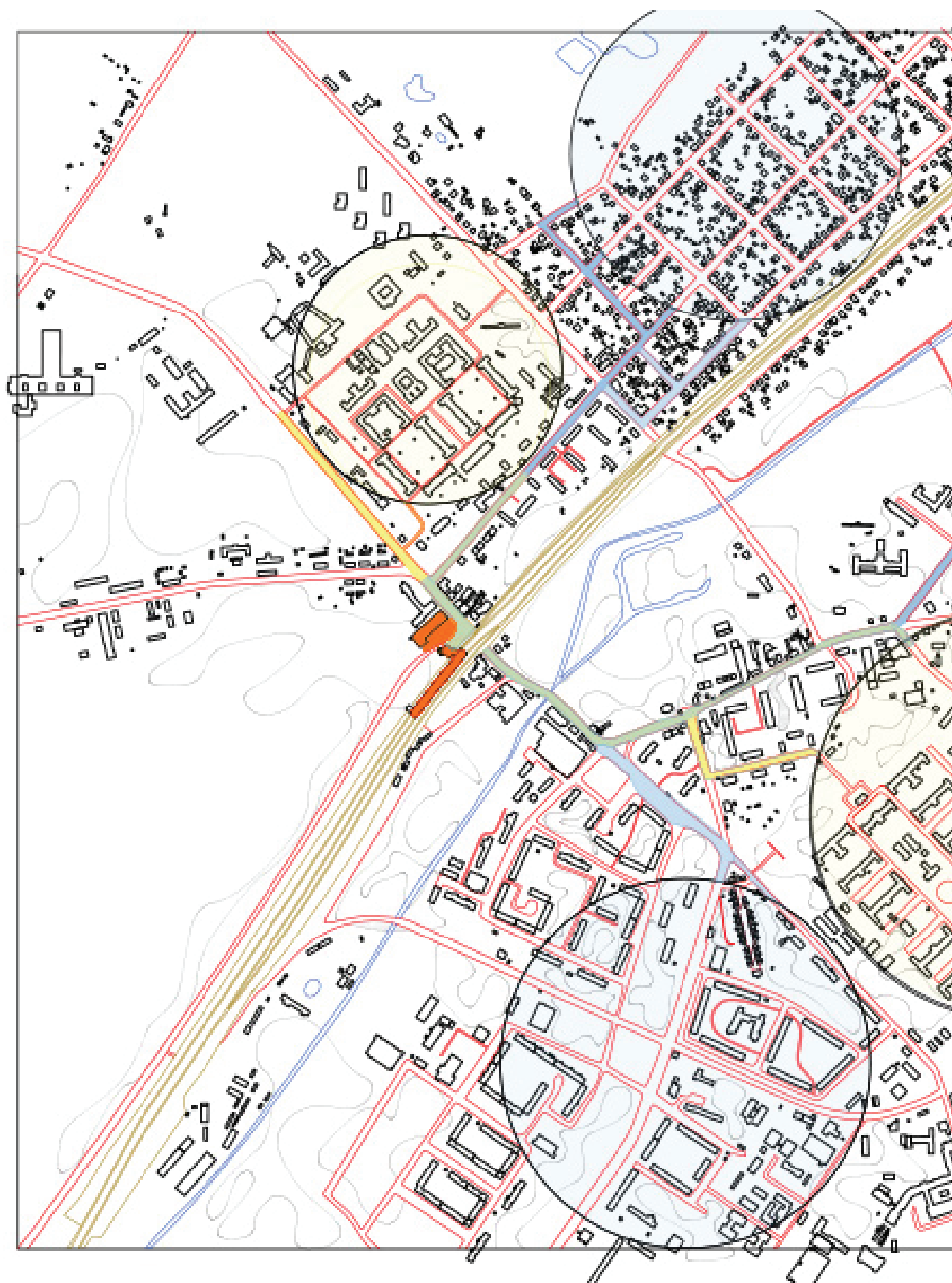
This history has created a town of different social classes, activities, arrival and departure times. In the morning, residents leave for Berlin, while an entire health sector arrives here for work. In the evening employees leave while residents return: all to the same train station. We would like to address the demographic diversity that defines Buch. At the central transition point we want to create a place for everyone to go to; a useful space where people can meet each other.

With this in mind, we examined the area around the train station. Though it is the common contact point for anyone entering or leaving town, it is a hub in which little common activity is taking place. Other than discount food shopping, people use this central node solely to park their bikes and cars in order to take the train into Berlin. There is no place to take a break, to relax and perhaps meet others. In a study conducted by Charite Berlin-Buch to improve the quality of life in town, this location was actually identified as having four problem issues: chaotic bike parking, provisional car parking, difficult way up to the station platform and the need to redesign the area in front of the Netto store to make better use of it. With our design, we have addressed those 4 issues.











#### Daily Traffic Patterns to and from the station area.

Buch is both a suburban residential district and a medical center. Therefore, every morning and evening, workers are commuting into and out of Buch. In the morning, residents travel by train into Berlin, while those in the health sector arrive at Buch to work in the hospital or medical research centers. In the evening, the traffic pattern is reversed. Most of that commute passes through the train station area, where then two bus stops disperse the people further into town.

This map shows this general traffic pattern. The yellow circles represent residents who work in Berlin, leaving Buch in the morning and returning in the evening. The blue circles represent those who work in Buch and therefore come to Buch in the morning, and leave in the evening. Of course there are exceptions, but this is the general trend.

Therefore, we felt it important to examine this transport hub.



LOCAL CONCERNS AS DEFINED BY BBB MANAGEMENT, CAMPUS BERLIN-BUCH.



Chaotic and random placement of bicycles and motorcycles.

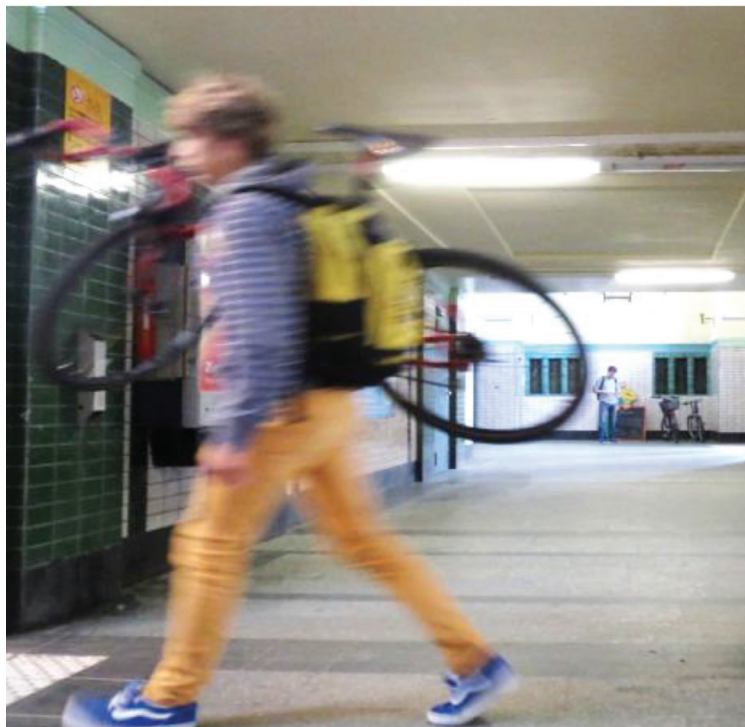


Forecourt should be redesigned to become a mobility hub.





Arbitrary, provisional parking for automobiles.



Lack of elevator on south side for disabled commuters.

## EKONOMIA

### Intervention

#### Cooperative gallery

- interior exhibition space
- exterior exhibition space
- workspace

#### Vitrines

#### Additional car parking

#### Additional bicycle stands

#### Waiting area on platform

#### Standing room at kiosk

#### Elevator on southside of station

### Financing source

Förderkreis für Kultur im Kiez

Kultur im Quartier

Financed through art classes and sale of art work

Kunst & Kulturverein

neighbors, i.e. Netto

DB, BVG Busverkehr, GVFG-Fördergeber,

Bezirk Pankow

Bezirk Pankow, DB, S-Bahn Berlin

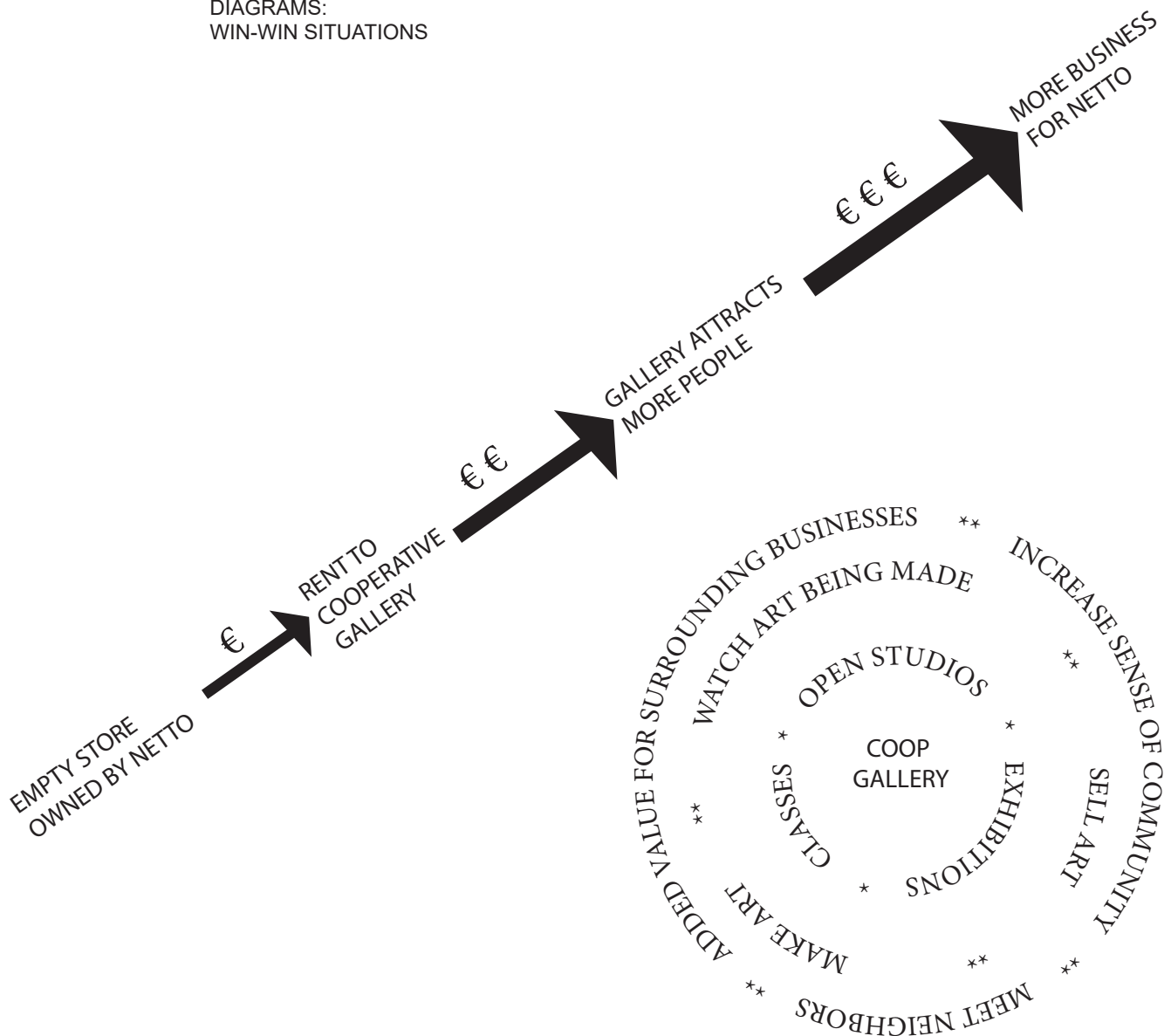
Helios Klinikum

Kleine Qi Gong - Schule

ECRC Charite Buch

### DIAGRAMS:

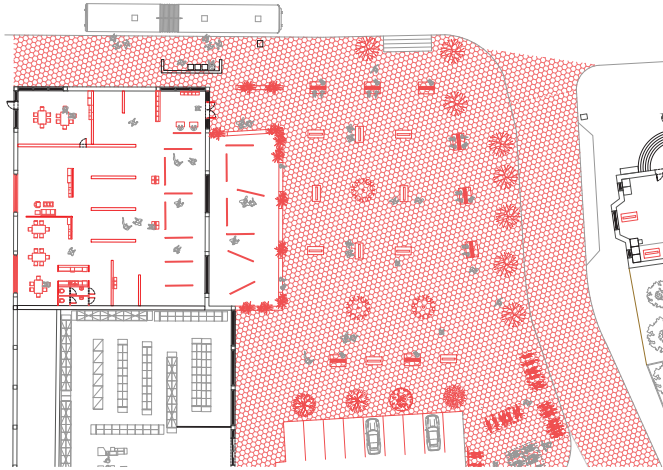
#### WIN-WIN SITUATIONS





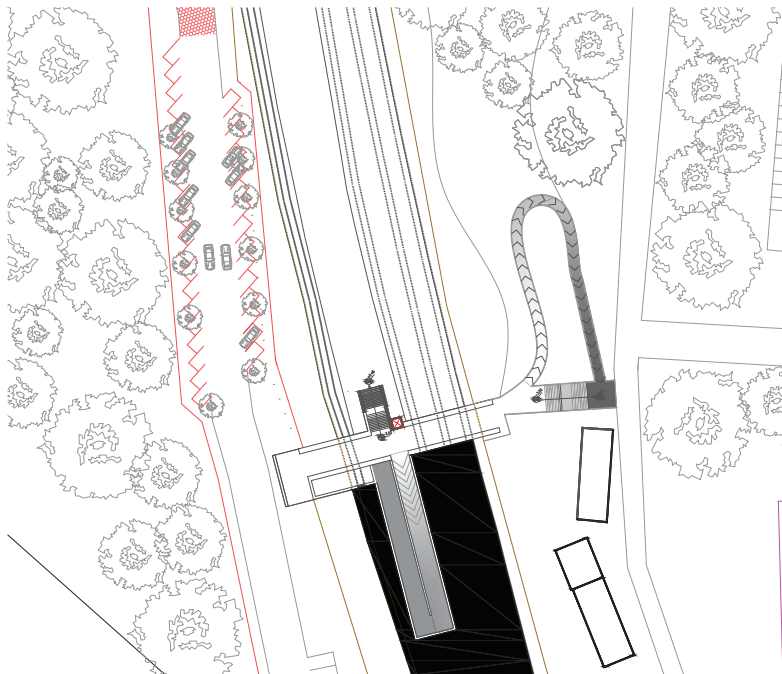
### Intervention 1:

Transforming the empty store into a cooperative gallery and art center. There would be space to exhibit in the front, workspace and classrooms in the back along with a kitchen, toilet and storage. This exhibition space will be extended outdoors to a terrace area, with vitrines to show art, as well as benches to relax and enjoy a break before continuing on the journey.



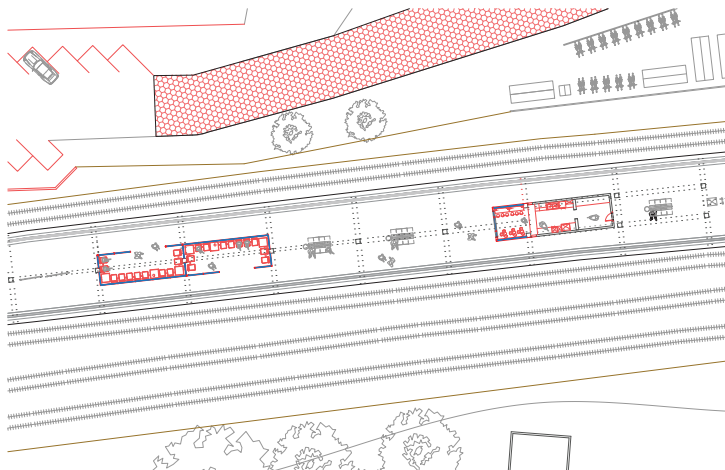
### Intervention 2:

Additional orderly car parking toward the south end of the station, with an elevator to the rear of the platform. This will alleviate some of the chaotic and congested parking habits of the residents as they try to catch their train. The elevator will help the disabled and others reach the platform quickly.

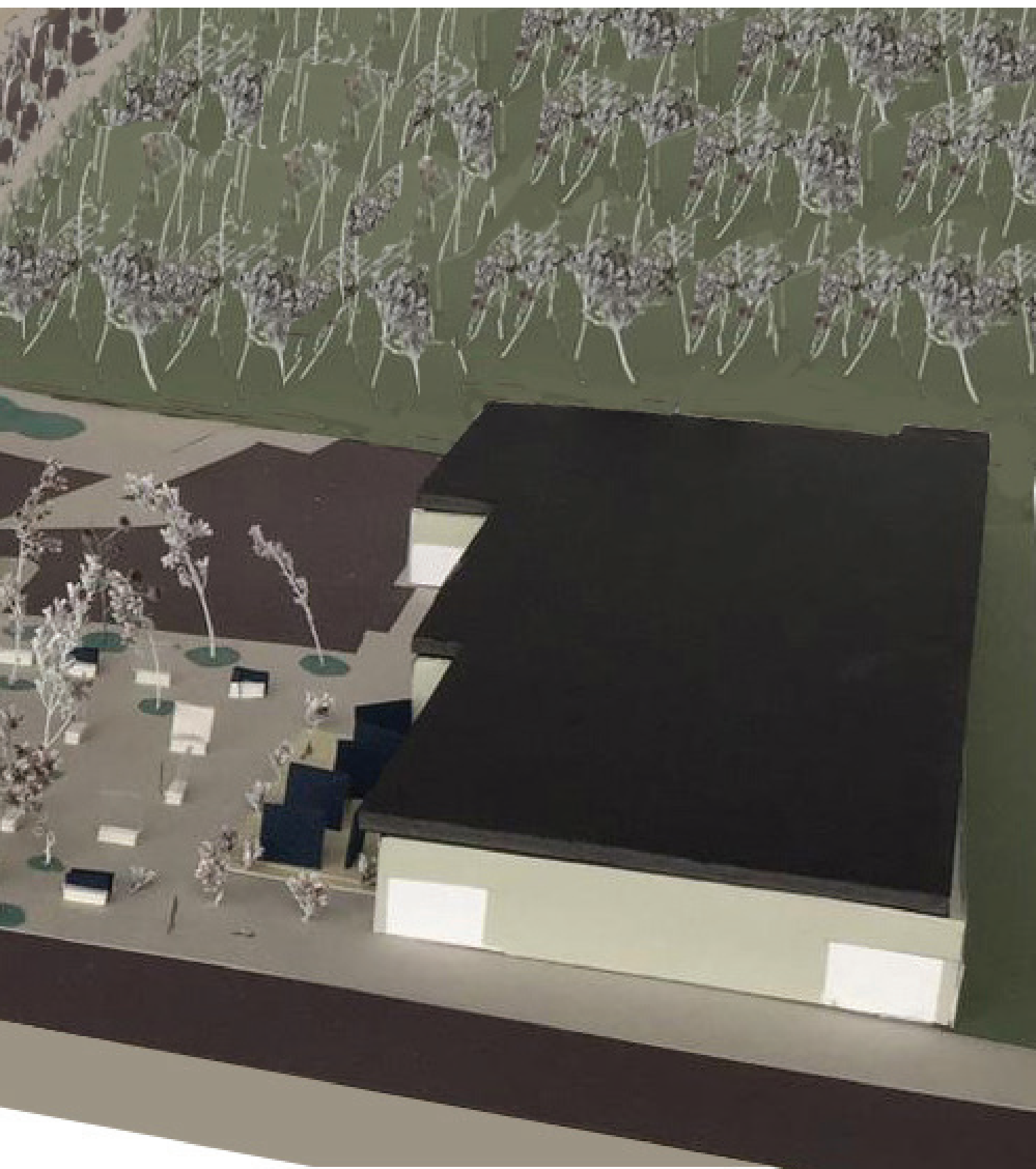


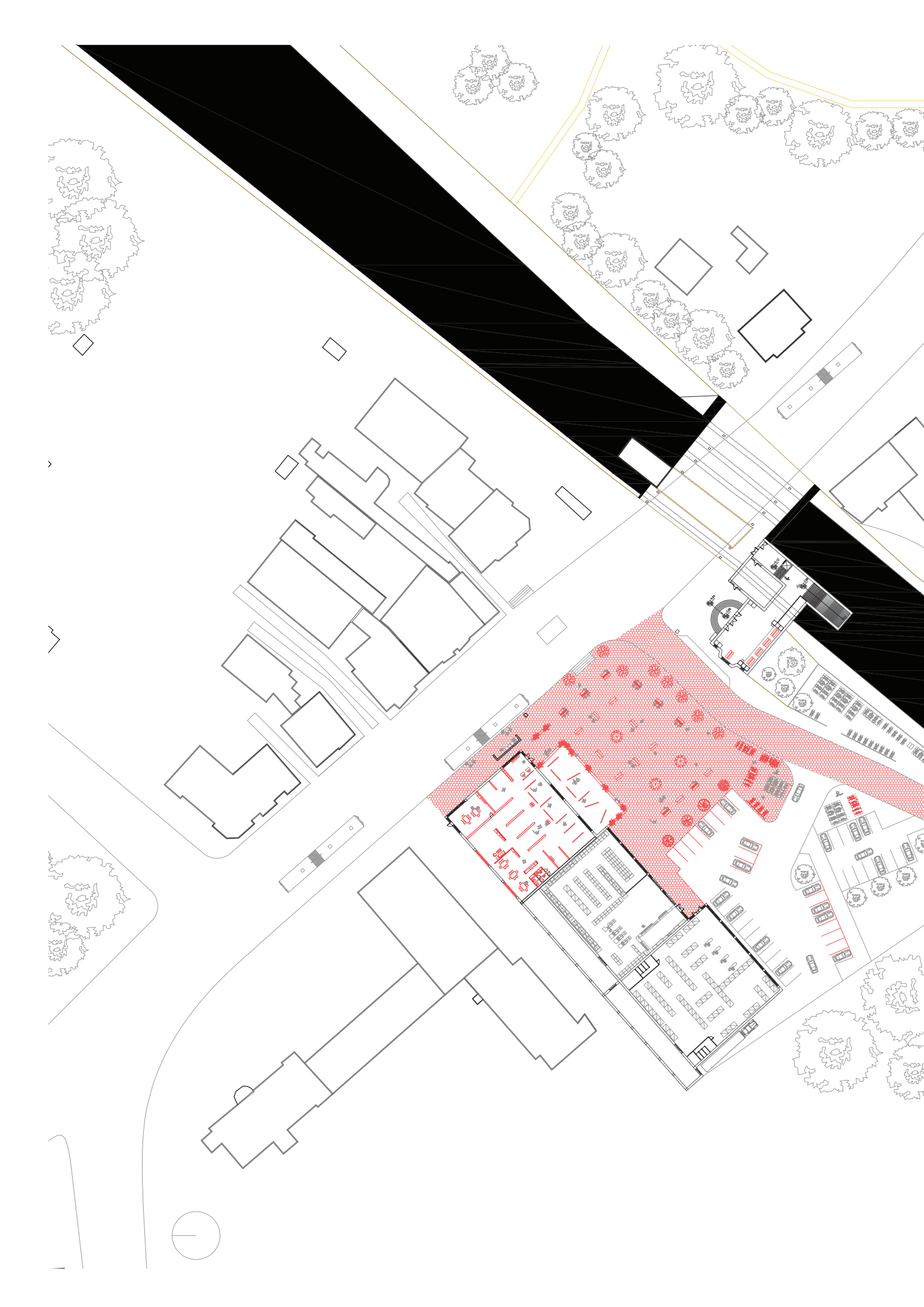
### Intervention 3:

The experience of waiting for the train is improved with a glass-enclosed seating area. Next to it, the existing kiosk is expanded to include a standing cafe to enjoy a coffee and chat with fellow travellers.

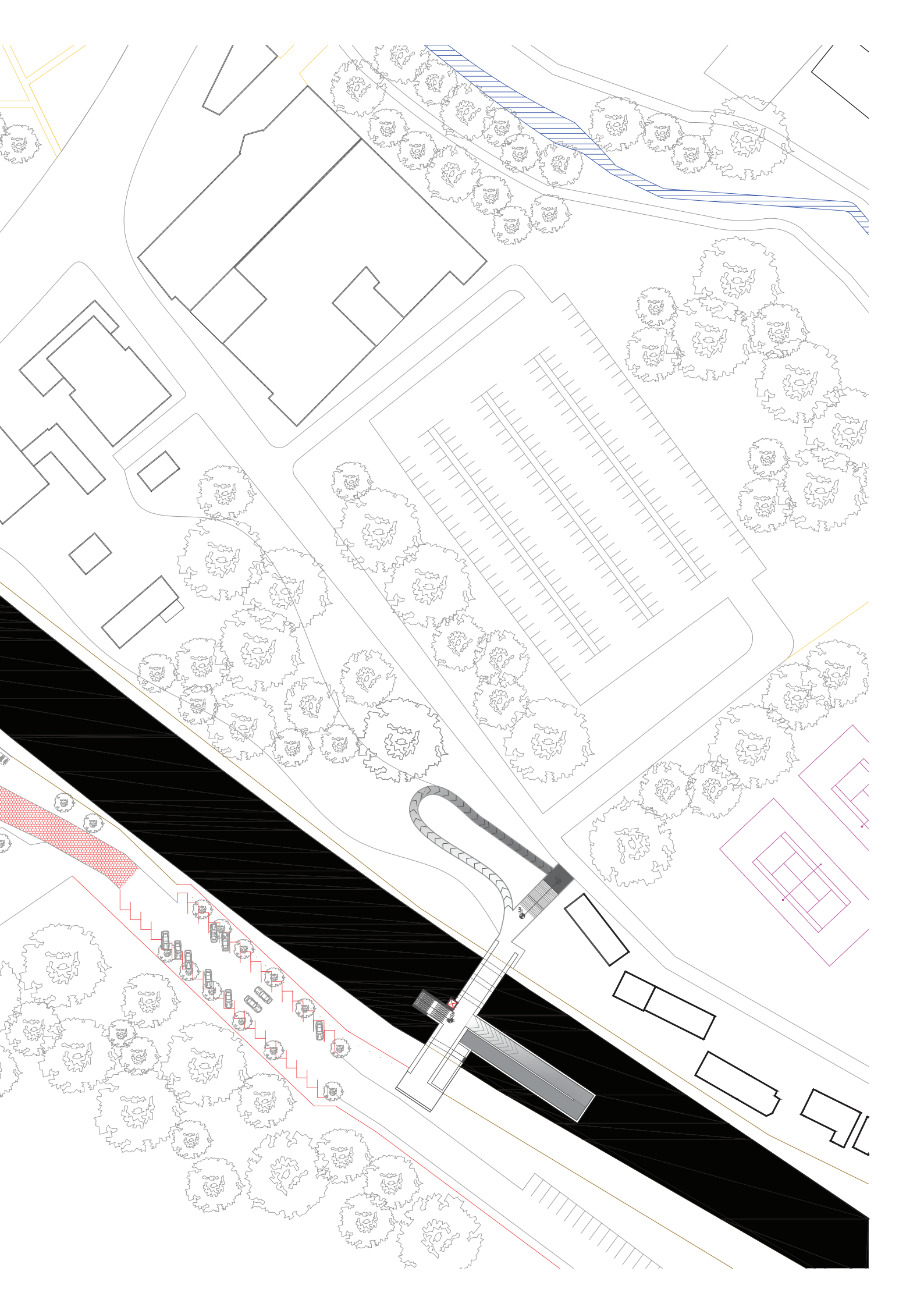


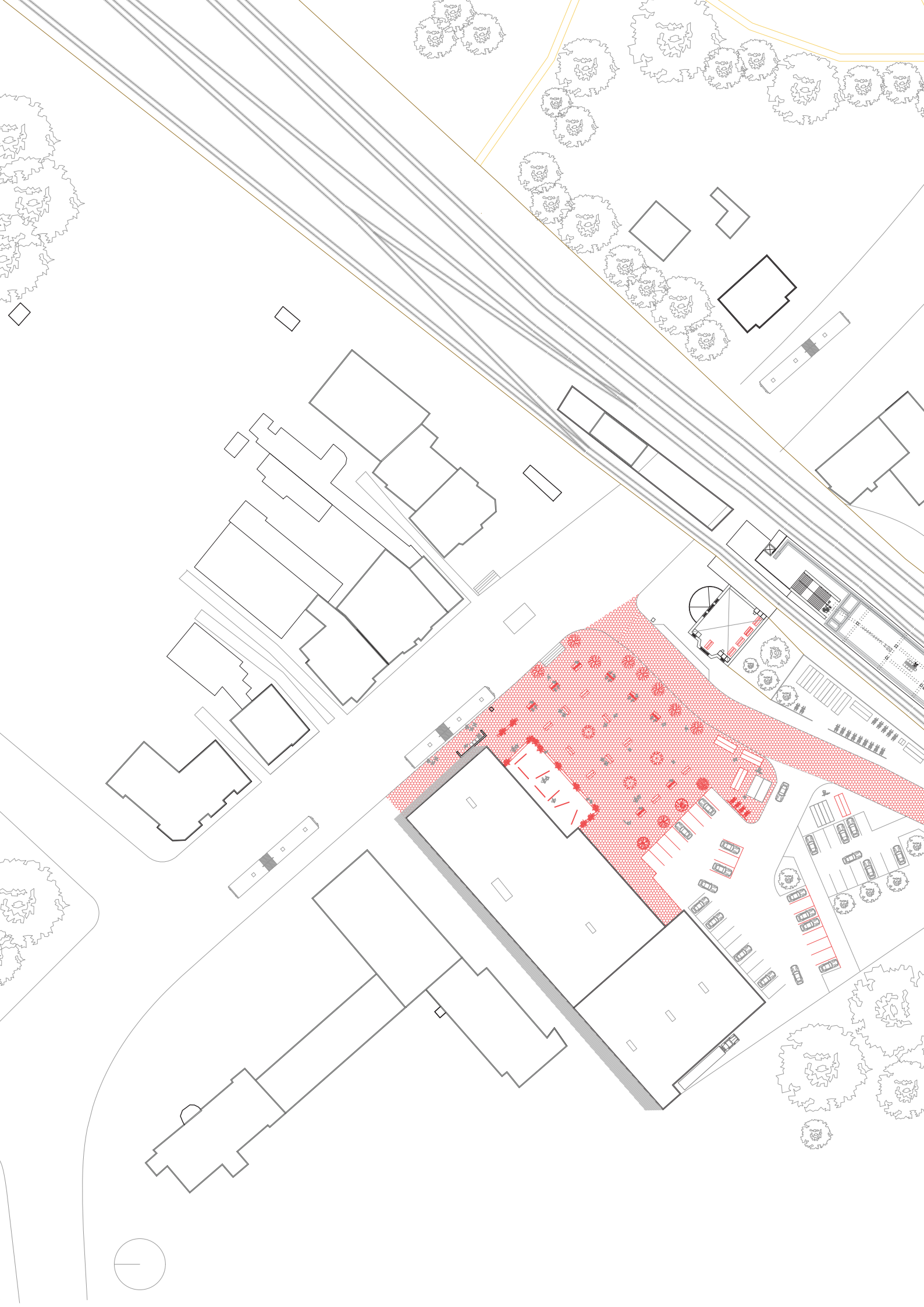




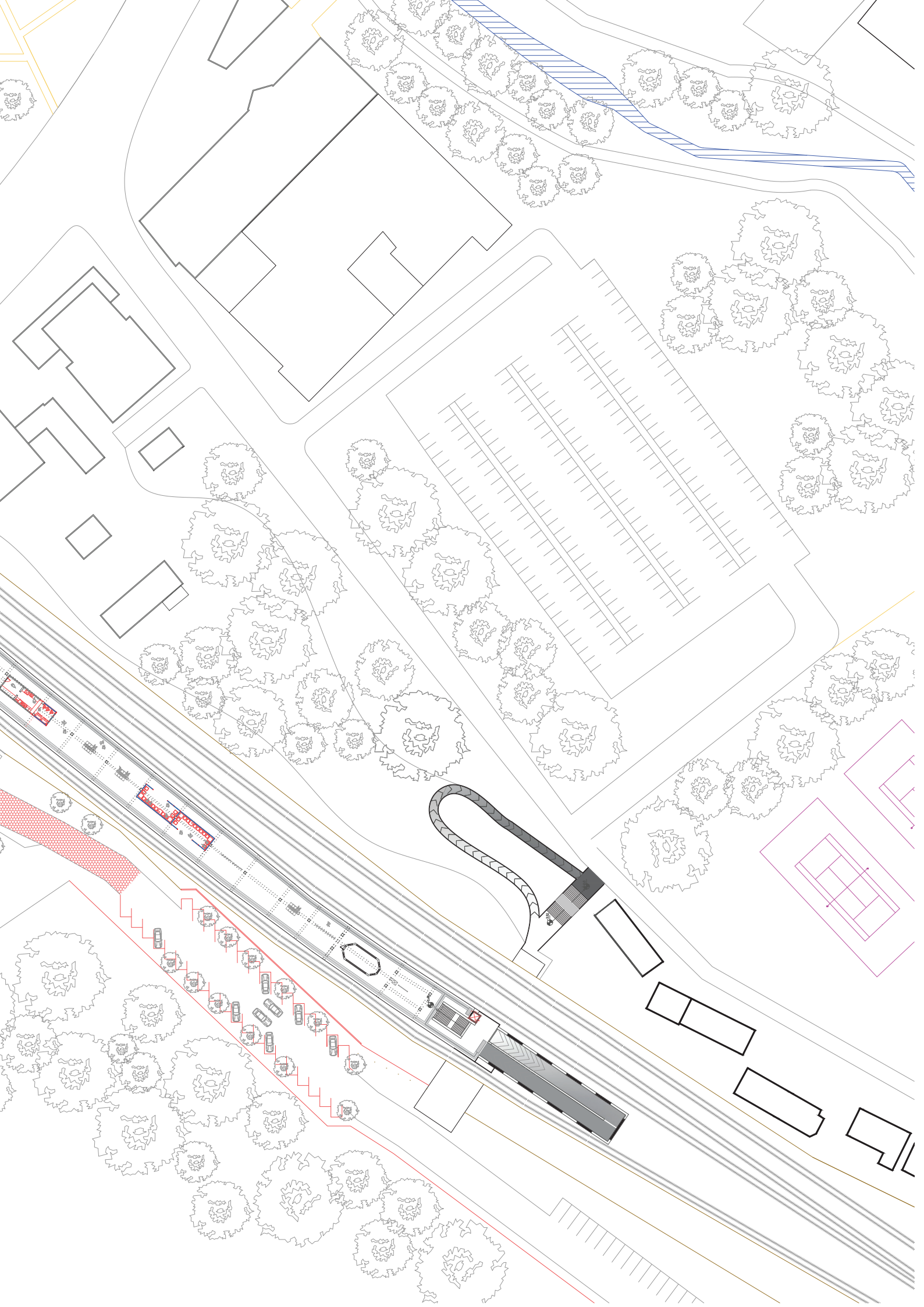


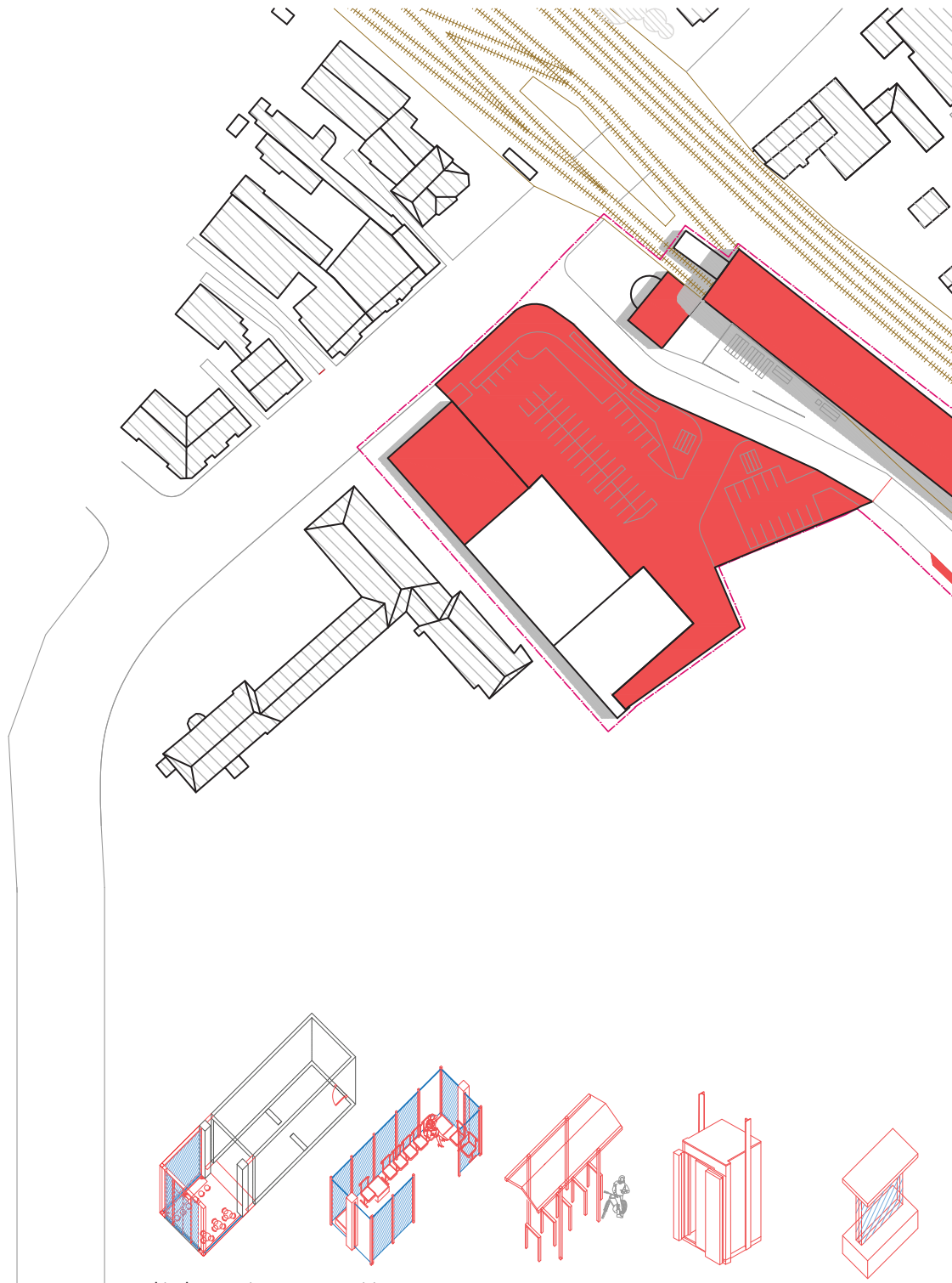
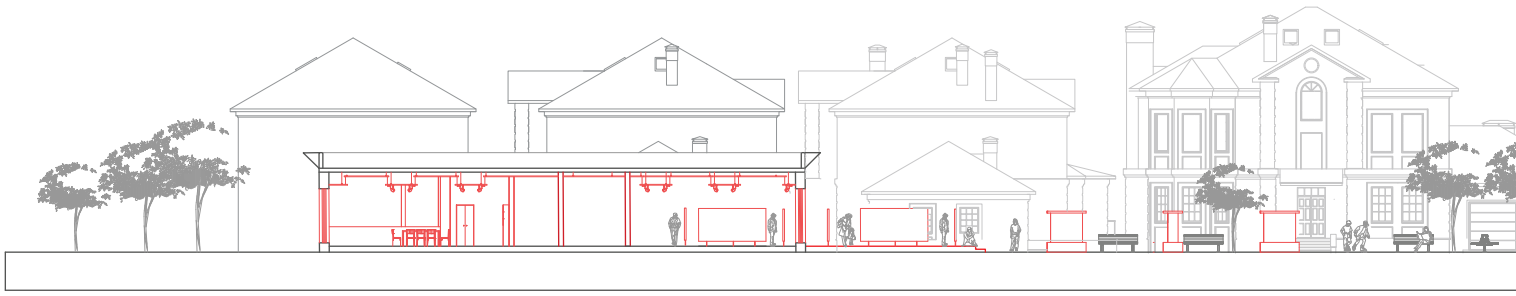












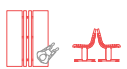
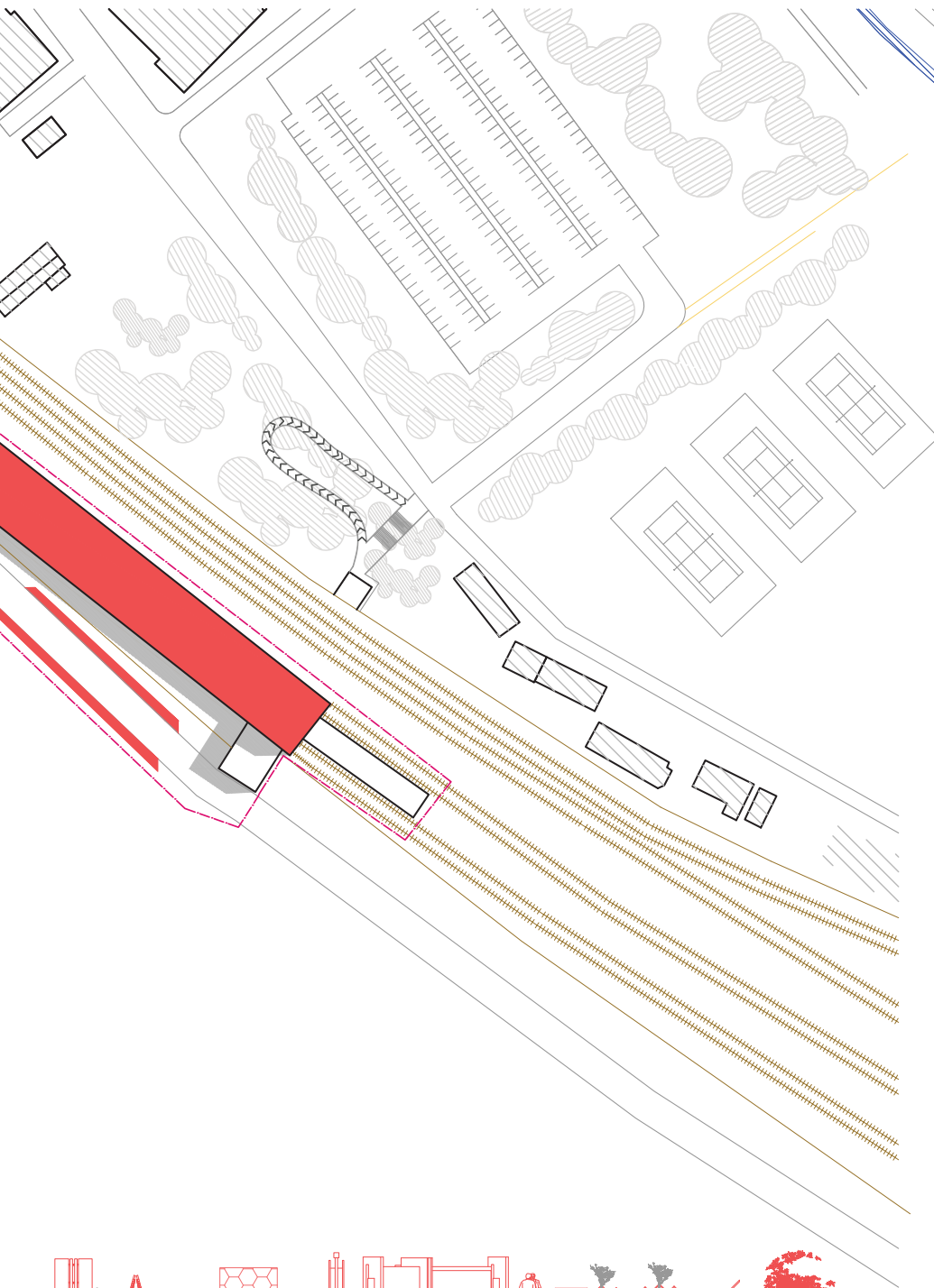
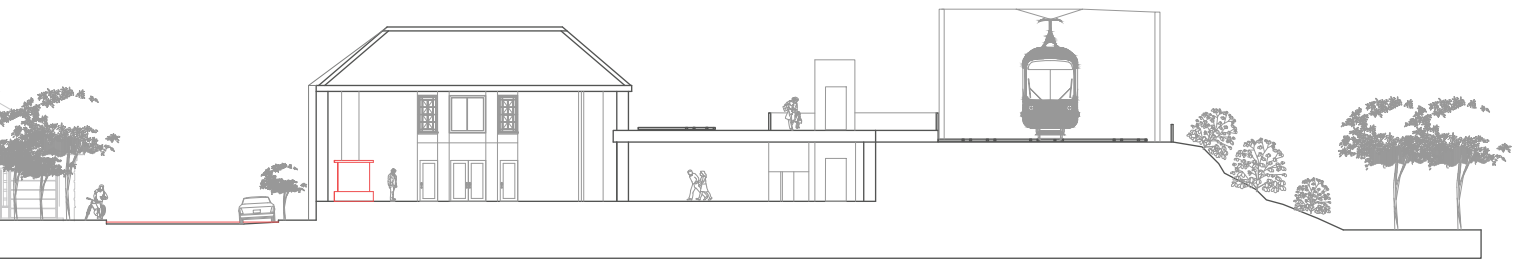
kiosk extension

waiting room for S-Bahn

bicycle parking

elevator

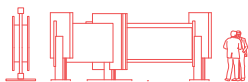
display window



bench



floor tiles



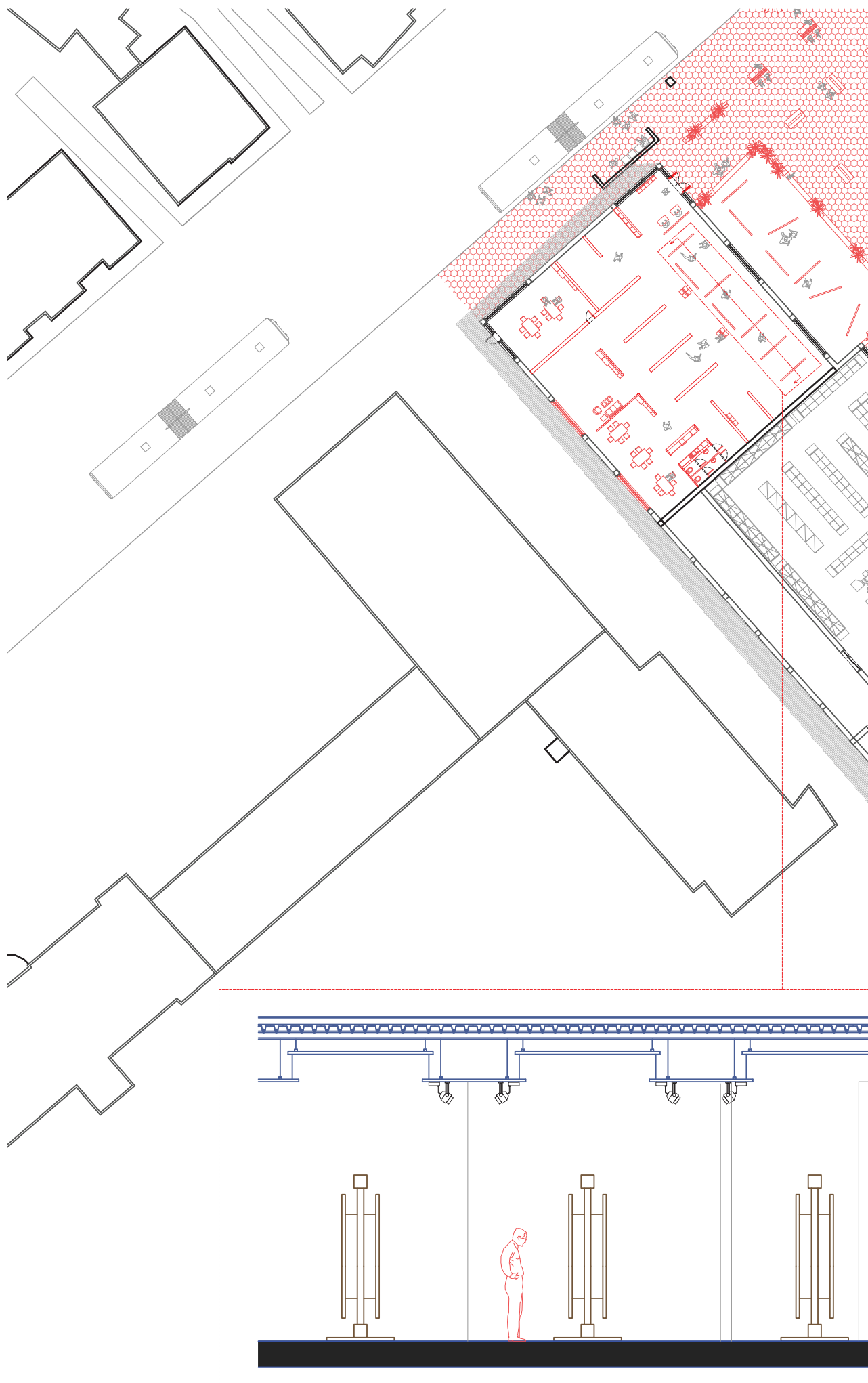
exhibition



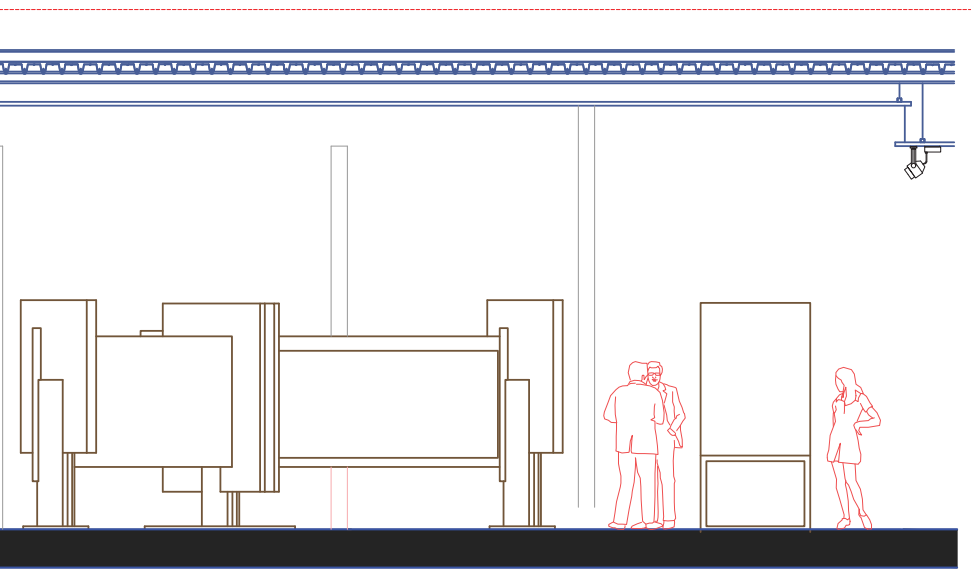
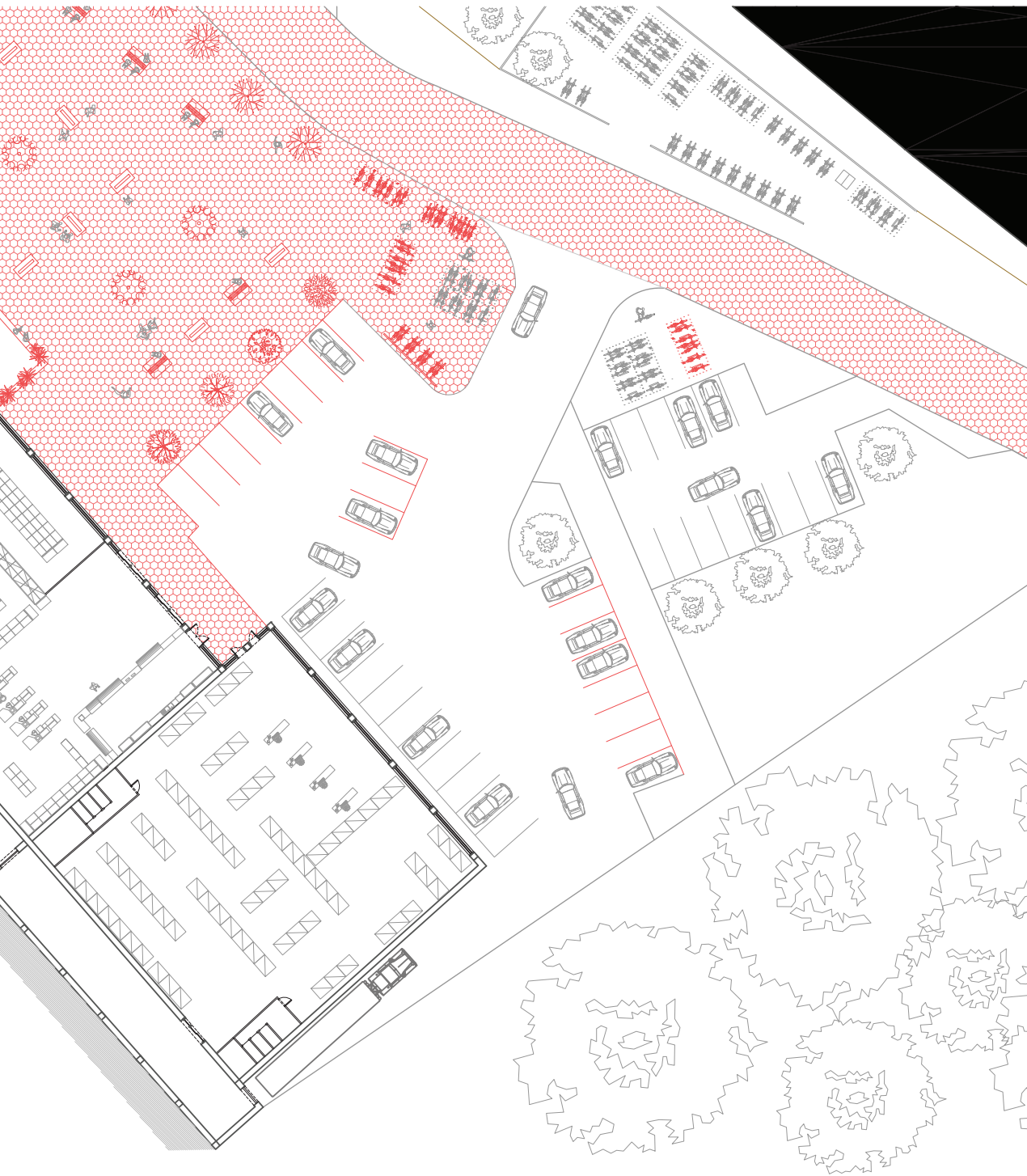
car parking



tree









---

Team: Mustafa Negem, Nicolas Paronneau, Kathryn Nussdorf





